

Advancing the Standard of  
WOUND CARE

In Advanced Wound Care Management

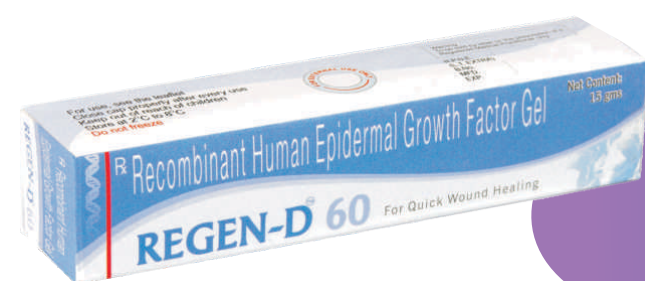
# REGEN-D<sup>®</sup> 60

Recombinant Human Epidermal Growth Factor 60 µg/g Gel

Master Key to Healing

### Indications:

- 1<sup>st</sup> and 2<sup>nd</sup> Degree Burns<sup>5</sup>
- Donor Site Skin Grafts<sup>5</sup>



Available in  
7.5 gms  
15 gms

Promotes Faster & Better Healing  
Prevents Life-threatening Complications

3. Phase III study in DFU published in WOUNDS 2006; 18(7):186-196  
4. PMS study in DFU published in Diabetes Research and Clinical Practice 2007  
5. Phase III study in Donor site Skin Grafts & Burns (data on file)  
6. Phase III study in Bed Sores (data on file)  
7. Phase III study in Chronic Leg Ulcers (data on file)

Advancing the Standard of  
WOUND CARE

In Advanced Wound Care Management

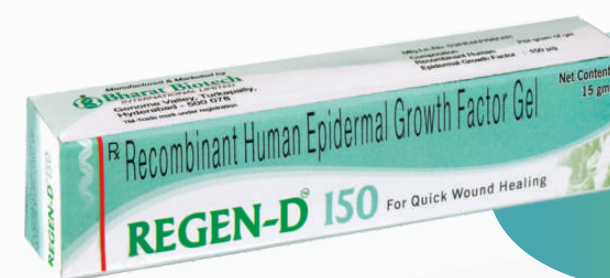
# REGEN-D<sup>®</sup> 150

Recombinant Human Epidermal Growth Factor 150 µg/g Gel

Master Key to Healing

### Indications:

- Neuropathic Diabetic Foot Ulcers<sup>3,4</sup>
- Pressure Ulcers including Bed Sores<sup>6</sup>
- Venous Leg Ulcers<sup>7</sup>



Available in  
7.5 gms  
15 gms

### International Patent

Epidermal Growth Factor composition, a process therefor and its application PCT/IN2006/000168

Promotes Faster & Better Healing  
Prevents Life-threatening Complications

### Abridged Prescribing Information

**Composition :** Each gram of gel contains: Recombinant Human Epidermal Growth Factor : 150 µg. **INDICATIONS:** REGEN-D<sup>®</sup>150 is indicated for the use of 1. Diabetic Foot Ulcers, 2. Bedsore, 3. Chronic Venous Ulcer. **CONTRAINDICATIONS:** REGEN-D<sup>®</sup>150 is generally well tolerated. However, the product should not be repeatedly given to persons known to be hypersensitive to any of the components of the product. The product is contraindicated with immunosuppressive or immuno stimulant therapy. **DOSAGE:** After cleaning the ulcer area, apply the gel so as to cover the entire ulcer area. Dosage of the gel depends on the specific size of the ulcer and it should be as per physician's advise. **REGEN-D<sup>®</sup>150 ADMINISTRATION:** REGEN-D<sup>®</sup>150 is in the form of a gel. It is to be spread evenly (topical application) on the affected part with a sterile cotton swab, twice a day, until the ulcer heals completely. **PRECAUTIONS:** It is suggested that the medical practitioners ascertain the hypersensitivity status of the subject. REGEN-D<sup>®</sup>150 therapy should be continued up to a period of 15 to 20 weeks. The continuation of the therapy is at the discretion of the physician. **ADVERSE REACTIONS:** REGEN-D<sup>®</sup>150 has proven low reactivity and is well tolerated in humans. Clinical trials so far, have not shown any adverse reactions to human subjects.

Before prescribing REGEN-D<sup>®</sup>150, please read the complete prescribing information. Further information is available on request from:



Bharat Biotech International Ltd.,  
Genome Valley, Shameerpet, Hyderabad,  
Ranga Reddy District - 500 078  
Telangana, India.  
www.bharatbiotech.com



TIME HEALS ALL WOUNDS

'Healing is a matter of Time, but it is sometimes also a matter of opportunity'

- Hippocrates (400 BC - 370 BC)

A Breakthrough Innovation



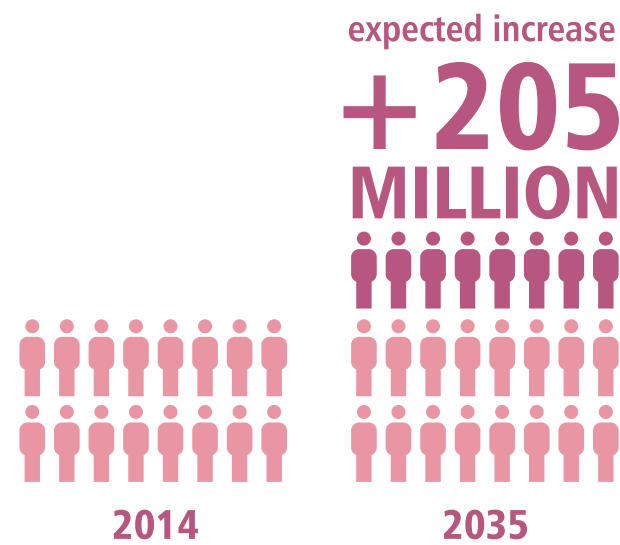
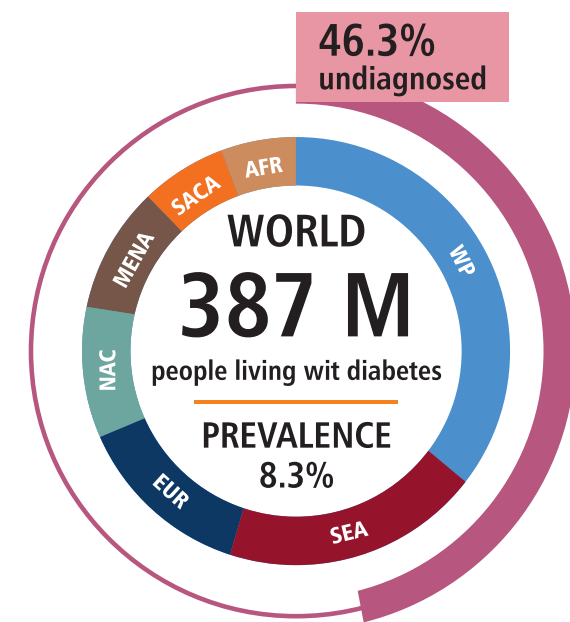
Advancing the Standard of  
WOUND CARE

In Diabetic Foot Ulcers  
5-year mortality following amputation is 50-68%!

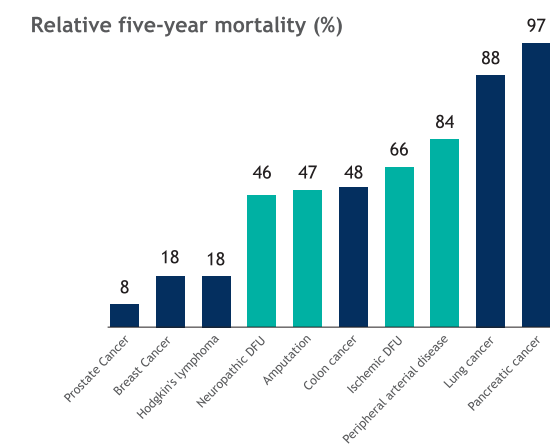
In the management of DFU

In the management of DFU

Diabetes disease burden<sup>1</sup>



- ➔ 25% of patients develop foot ulcers during their life time<sup>2</sup>
- ➔ Major long-term impact on morbidity, mortality and quality of life<sup>2</sup>



Every 20 seconds a lower limb is amputated due to complications of diabetes<sup>2</sup>

Mortality following amputation increases with level of amputation and ranges from 50-68% at five years, which is comparable or worse than for most malignancies<sup>2</sup>

The Principle Aim: Wound Closure  
The Intention: treat at an early stage to allow prompt healing<sup>2</sup>

A Breakthrough Innovation



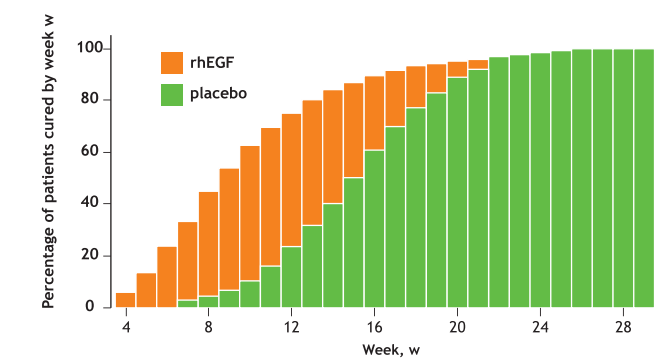
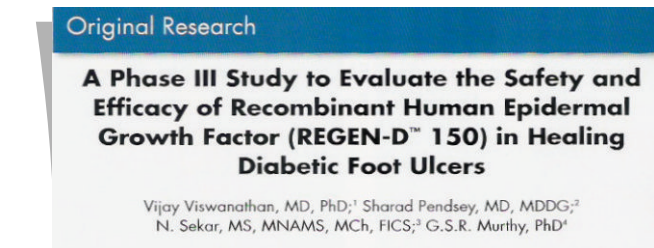
Promotes wound healing

- ➔ Cell proliferation
- ➔ Angiogenesis
- ➔ Collagen synthesis
- ➔ Epithelization
- ➔ Anti-apoptosis
- ➔ Matrix Metalloproteinases (MMPs)

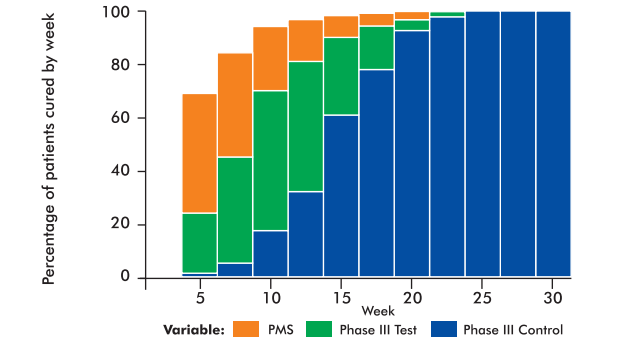
.....Prevents Amputation Increases Survival



Phase-III Trial<sup>3</sup>



PMS Study and Phase-III Trial<sup>4</sup>



.....Prevents Amputation Increases Survival

1. International Diabetes Federation Atlas 6th Edition-2014 Update  
2. International Best Practice Guidelines: Wound Management in Diabetic Foot Ulcers. Wounds International, 2013